

Recombinant Mouse Cathepsin L/CTSL Protein (His Tag)

Catalog No: RPES0036

Category: Recombinant Protein

Sequence Information

Species: Mouse

Sequence: Thr18-Asn334

Accession: P06797

Tag: C-6His

Product Information

Synonyms: Cathepsin L1; Major excreted protein; p39 cysteine proteinase; Ctsl1;1190035F06Rik

Source: Human Cells

Purity: > 95 % as determined by reducing SDS-PAGE.

Endotoxin: < 1.0 EU per µg as determined by the LAL method.

Formulation: Lyophilized from a 0.2 µM filtered solution of 20mM PB,150mM NaCl, pH7.4.

Reconstitution: Please refer to the printed manual for detailed information.

Storage: Lyophilized proteins are stable for up to 12 months when stored at -20 to -80°C.

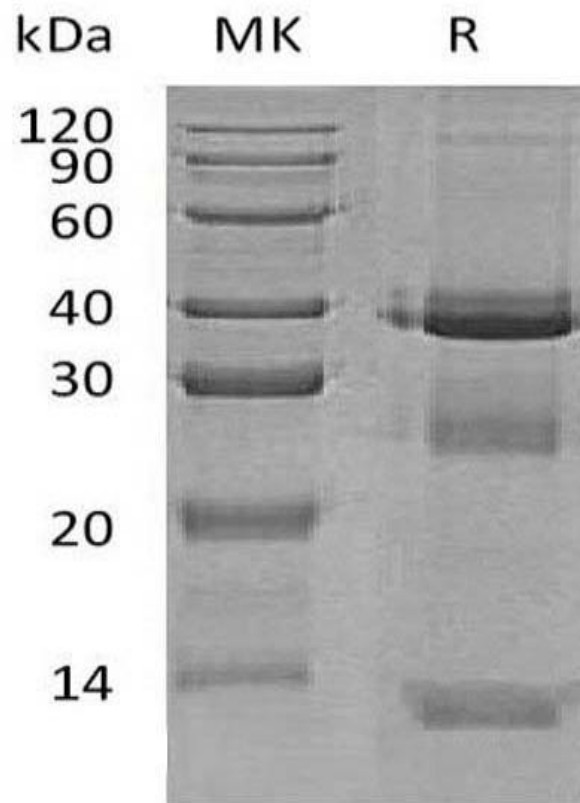
Reconstituted protein solution can be stored at 4-8°C for 2-7 days. Aliquots of reconstituted samples are stable at < -20°C for 3 months.

Shipping: This product is provided as lyophilized powder which is shipped with ice packs.

Background

Mouse Cathepsin L is a lysosomal cysteine proteinase which is a member of the peptidase C1 family. This protein is a dimer composed of disulfide-linked heavy and light chains, both produced from a single protein precursor. Cathepsin L plays a major role in intracellular protein catabolism. Its substrates include collagen and elastin, as well as alpha-1 protease inhibitor, a major controlling element of neutrophil elastase activity. Cathepsin L has been implicated in several pathologic processes, including myofibril necrosis in myopathies and in myocardial ischemia, and in the renal tubular response to proteinuria.

Image



Contact Details | Dublin, Ireland

Email: hello@assaygenie.com | Web: www.assaygenie.com

Copyright © 2020 Reagent Genie, All Rights Reserved. All information / detail is correct at time of going to print.