

Recombinant Human Cathepsin L/CTSL Protein (His Tag)

Catalog No: RPES0035

Category: Recombinant Protein

Sequence Information

Species: Human

Sequence: Thr18-Val333

Accession: P07711

Tag: C-6His

Product Information

Synonyms: Cathepsin L1; Major Excreted Protein; MEP; CTSL1; CTSL

Source: Human Cells

Purity: > 95 % as determined by reducing SDS-PAGE.

Endotoxin: < 1.0 EU per µg as determined by the LAL method.

Formulation: Supplied as a 0.2 µM filtered solution of 20mM HAc-NaAc, 150mM NaCl, pH 4.5.

Reconstitution: Please refer to the printed manual for detailed information.

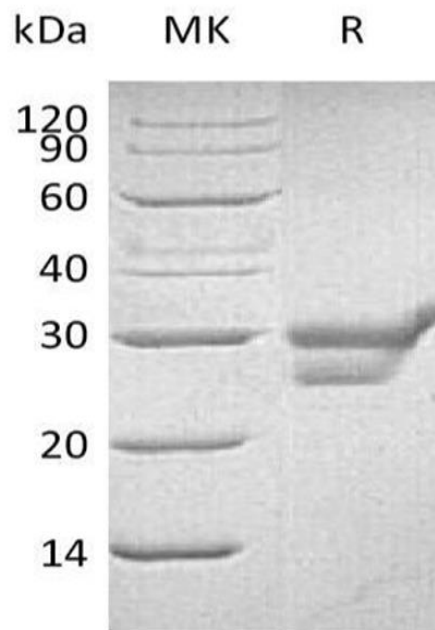
Storage: Store at < -20°C, stable for 6 months. Please minimize freeze-thaw cycles.

Shipping: This product is provided as liquid. It is shipped at frozen temperature with blue ice/gel packs. Upon receipt; store it immediately at < -20°C.

Background

Cathepsin L is an enzyme. Cathepsin L, a lysosomal endopeptidase expressed in most eukaryotic cells, is a member of the papain-like family of cysteine proteinases. Cathepsin L plays a major role in antigen processing, tumor invasion and metastasis, bone resorption, and turnover of intracellular and secreted proteins involved in growth regulation. Unlike the precursor forms of other papain family members, the 43 kDa pro-cathepsin L itself is secreted from various cells. Procathepsin L is the major excreted protein of malignantly transformed mouse fibroblasts and is also one of the major acidic cysteine proteases in mammalian cells.

Image



Contact Details | Dublin, Ireland

Email: hello@assaygenie.com | Web: www.assaygenie.com

Copyright © 2020 Reagent Genie, All Rights Reserved. All information / detail is correct at time of going to print.