

PACO64555

---

## Product Information

**Size:**

50ul

**Reactivity:**

Human

**Source:**

Rabbit

**Isotype:**

IgG

**Applications:**

ELISA, IF

**Recommended dilutions:**

IF:1:100-1:500

**Protein Background:**

Thought to stabilize the calcium channel in an inactivated (closed) state. Modulates calcium current when coexpressed with CACNA1G.

**Gene ID:**

TMEM37

**Uniprot**

Q8WXS4

**Synonyms:**

Voltage-dependent calcium channel gamma-like subunit (Neuronal voltage-gated calcium channel gamma-like subunit) (Transmembrane protein 37), TMEM37, PR

**Immunogen:**

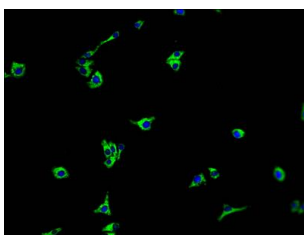
Peptide sequence from Human Voltage-dependent calcium channel gamma-like subunit protein (4-20AA).

**Storage:**

Preservative: 0.03% Proclin 300. Constituents: 50% Glycerol, 0.01M PBS, PH 7.4

## Product Images

---



Immunofluorescence staining of HepG2 cells with PACO64555 at 1:100, counter-stained with DAPI. The cells were fixed in 4% formaldehyde and blocked in 10% normal Goat Serum. The cells were then incubated with the antibody overnight at 4°C. The secondary antibody was Alexa Fluor 488-conjugated AffiniPure Goat Anti-Rabbit IgG(H+L).