

PACO64511

Product Information

Size:

50ul

Reactivity:

Rat, Mouse

Source:

Rabbit

Isotype:

IgG

Applications:

ELISA, WB

Recommended dilutions:

WB:1:1000-1:5000

Protein Background:

In presence of calcium ions, it binds to surfactant phospholipids and contributes to lower the surface tension at the air-Liquid interface in the alveoli of the mammalian lung and is essential for normal respiration. Enhances the expression of MYO18A/SP-R210 on alveolar macrophages.

Gene ID:

Sftpa1

Uniprot

P08427

Synonyms:

Pulmonary surfactant-associated protein A (PSAP) (PSP-A) (SP-A), Sftpa1, Sftp-1 Sftp1 Sftpa

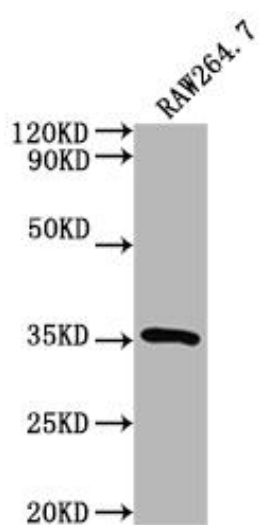
Immunogen:

Recombinant Rat Sftpa1 protein (21-248 AA).

Storage:

Preservative: 0.03% Proclin 300. Constituents: 50% Glycerol, 0.01M PBS, PH 7.4

Product Images



Western Blot. Positive WB detected in: RAW264.7 whole cell lysate. All lanes: Sftpa1 antibody at 1:2000. Secondary. Goat polyclonal to rabbit IgG at 1/50000 dilution. Predicted band size: 27 kDa. Observed band size: 35 kDa.