

PACO64499

Product Information

Size:

50ul

Reactivity:

Human

Source:

Rabbit

Isotype:

IgG

Applications:

ELISA, WB

Recommended dilutions:

WB:1:1000-1:5000

Protein Background:

Involved in the cornified cell envelope formation. Multifunctional epidermal matrix protein. Reversibly binds calcium.

Gene ID:

RPTN

Uniprot

Q6XPR3

Synonyms:

Repetin, RPTN

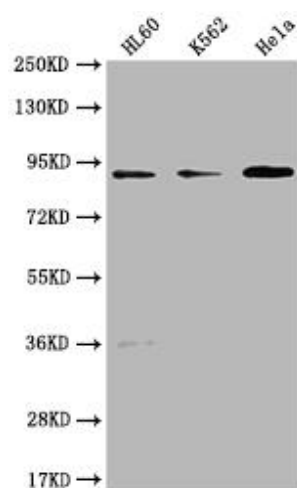
Immunogen:

Peptide sequence from Human Repetin protein (86-103AA).

Storage:

Preservative: 0.03% Proclin 300. Constituents: 50% Glycerol, 0.01M PBS, PH 7.4

Product Images



Western Blot. Positive WB detected in: HL60 whole cell lysate, K562 whole cell lysate, HeLa whole cell lysate. All lanes: RPTN antibody at 1:1000. Secondary. Goat polyclonal to rabbit IgG at 1/50000 dilution. Predicted band size: 91 kDa. Observed band size: 91 kDa.