

PCDHGB7 Antibody



PACO64455

Product Information

Size:

50ul

Reactivity:

Human

Source:

Rabbit

Isotype:

IgG

Applications:

ELISA, IF

Recommended dilutions:

IF:1:100-1:500

Protein Background:

Potential calcium-dependent cell-adhesion protein. May be involved in the establishment and maintenance of specific neuronal connections in the brain.

Gene ID:

PCDHGB7

Uniprot

Q9Y5F8

Synonyms:

Protocadherin gamma-B7 (PCDH-gamma-B7), PCDHGB7

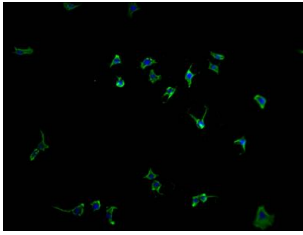
Immunogen:

Recombinant Human Protocadherin gamma-B7 protein (719-929AA).

Storage:

Preservative: 0.03% Proclin 300. Constituents: 50% Glycerol, 0.01M PBS, PH 7.4

Product Images



Immunofluorescence staining of SH-SY5Y cells with PACO64455 at 1:200, counter-stained with DAPI. The cells were fixed in 4% formaldehyde and blocked in 10% normal Goat Serum. The cells were then incubated with the antibody overnight at 4°C. The secondary antibody was Alexa Fluor 488-conjugated AffiniPure Goat Anti-Rabbit IgG(H+L).