

OR6C1 Antibody



PACO64427

Product Information

Size:

50ul

Reactivity:

Human

Source:

Rabbit

Isotype:

IgG

Applications:

ELISA, WB

Recommended dilutions:

WB:1:1000-1:5000

Protein Background:

Odorant receptor.

Gene ID:

OR6C1

Uniprot

Q96RD1

Synonyms:

Olfactory receptor 6C1 (OST267), OR6C1

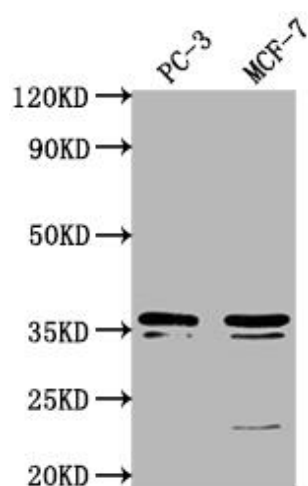
Immunogen:

Peptide sequence from Human Olfactory receptor 6C1 protein (259-275AA).

Storage:

Preservative: 0.03% Proclin 300. Constituents: 50% Glycerol, 0.01M PBS, PH 7.4

Product Images



Western Blot. Positive WB detected in: PC-3 whole cell lysate, MCF-7 whole cell lysate. All lanes: OR6C1 antibody at 1:1000. Secondary. Goat polyclonal to rabbit IgG at 1/50000 dilution. Predicted band size: 36 kDa. Observed band size: 36 kDa.