

# OR2M2 Antibody



PACO64379

---

## Product Information

**Size:**

50ul

**Reactivity:**

Human

**Source:**

Rabbit

**Isotype:**

IgG

**Applications:**

ELISA, IF

**Recommended dilutions:**

IF:1:100-1:500

**Protein Background:**

Odorant receptor.

**Gene ID:**

OR2M2

**Uniprot**

Q96R28

**Synonyms:**

Olfactory receptor 2M2 (OST423), OR2M2

**Immunogen:**

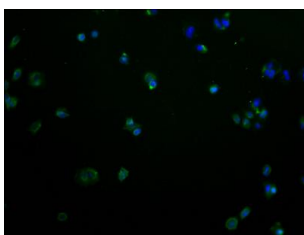
Peptide sequence from Human Olfactory receptor 2M2 protein (259-273AA).

**Storage:**

Preservative: 0.03% Proclin 300. Constituents: 50% Glycerol, 0.01M PBS, PH 7.4

## Product Images

---



Immunofluorescence staining of MCF-7 cells with PACO64379 at 1:100, counter-stained with DAPI. The cells were fixed in 4% formaldehyde and blocked in 10% normal Goat Serum. The cells were then incubated with the antibody overnight at 4°C. The secondary antibody was Alexa Fluor 488-conjugated AffiniPure Goat Anti-Rabbit IgG(H+L).