

## Product Information

**Size:**

50ul

**Reactivity:**

Rat, Human

**Source:**

Rabbit

**Isotype:**

IgG

**Applications:**

ELISA, WB

**Recommended dilutions:**

WB:1:1000-1:5000

**Protein Background:**

Calcium-binding protein. May have a role in calcium homeostasis. {ECO:0000250}. ; Nesfatin-1: Anorexigenic peptide, seems to play an important role in hypothalamic pathways regulating food intake and energy homeostasis, acting in a leptin-independent manner. May also exert hypertensive roles and modulate blood pressure through directly acting on peripheral arterial resistance.

**Gene ID:**

Nucb2

**Uniprot**

Q9JI85

**Synonyms:**

Nucleobindin-2 (DNA-binding protein NEFA) (Prepronesfatin) [Cleaved into: Nesfatin-1], Nucb2, Nefa

**Immunogen:**

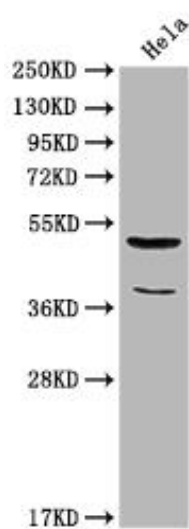
Recombinant Rat Nucb2 protein (194-420AA).

**Storage:**

Preservative: 0.03% Proclin 300. Constituents: 50% Glycerol, 0.01M PBS, PH 7.4

## Product Images

---



Western Blot. Positive WB detected in: HeLa whole cell lysate. All lanes: Nucb2 antibody at 1:2000. Secondary. Goat polyclonal to rabbit IgG at 1/50000 dilution. Predicted band size: 51 kDa. Observed band size: 51 kDa.