

MROH8 Antibody



PACO64307

Product Information

Size:

50ul

Reactivity:

Human

Source:

Rabbit

Isotype:

IgG

Applications:

ELISA, WB

Recommended dilutions:

WB:1:1000-1:5000

Protein Background:

Gene ID:

MROH8

Uniprot

Q9H579

Synonyms:

Protein MROH8 (Maestro heat-like repeat-containing protein family member 8), MROH8, C20orf131 C20orf132

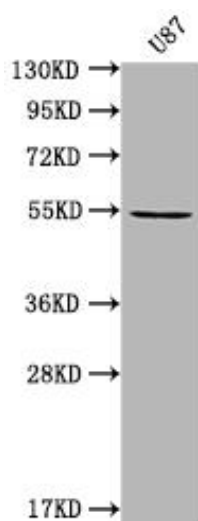
Immunogen:

Recombinant Human Protein MROH8 protein (1-275AA).

Storage:

Preservative: 0.03% Proclin 300. Constituents: 50% Glycerol, 0.01M PBS, PH 7.4

Product Images



Western Blot. Positive WB detected in: U87 whole cell lysate. All lanes: MROH8 antibody at 1:2000. Secondary. Goat polyclonal to rabbit IgG at 1/50000 dilution. Predicted band size: 55, 100 kDa. Observed band size: 55 kDa.