

# COL18A1 Antibody



PACO64219

---

## Product Information

**Size:**

50ul

**Reactivity:**

Human

**Source:**

Rabbit

**Isotype:**

IgG

**Applications:**

ELISA, IF

**Recommended dilutions:**

IF:1:100-1:500

**Protein Background:**

COLA18A probably plays a major role in determining the retinal structure as well as in the closure of the neural tube.

**Gene ID:**

COL18A1

**Uniprot**

P39060

**Synonyms:**

Collagen alpha-1(XVIII) chain [Cleaved into: Endostatin, Non-collagenous domain 1 (NC1)], COL18A1

**Immunogen:**

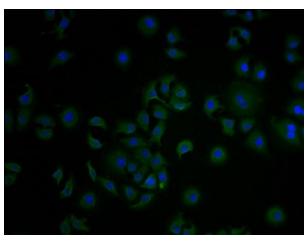
Recombinant Human Collagen alpha-1(XVIII) chain protein (1600-1754AA).

**Storage:**

Preservative: 0.03% Proclin 300. Constituents: 50% Glycerol, 0.01M PBS, PH 7.4

## Product Images

---



Immunofluorescence staining of A549 cells with PACO64219 at 1:100, counter-stained with DAPI. The cells were fixed in 4% formaldehyde and blocked in 10% normal Goat Serum. The cells were then incubated with the antibody overnight at 4°C. The secondary antibody was Alexa Fluor 488-conjugated AffiniPure Goat Anti-Rabbit IgG(H+L).