

### Product Information

**Size:**

50ul

**Reactivity:**

Human

**Source:**

Rabbit

**Isotype:**

IgG

**Applications:**

ELISA, WB

**Recommended dilutions:**

WB:1:1000-1:5000

**Protein Background:**

Involved in cannabinoid-induced CNS effects. Acts by inhibiting adenylate cyclase. Could be a receptor for anandamide. Inhibits L-type Ca(2+) channel current. Isoform 2 and isoform 3 have altered ligand binding.

**Gene ID:**

CNR1

**Uniprot**

P21554

**Synonyms:**

Cannabinoid receptor 1 (CB-R) (CB1) (CANN6), CNR1, CNR

**Immunogen:**

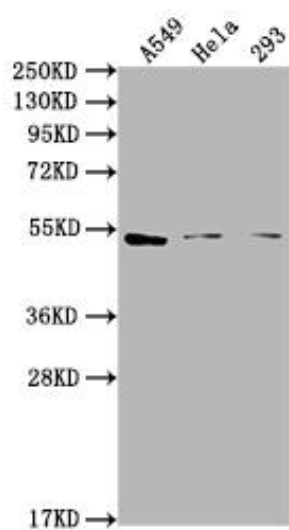
Recombinant Human Cannabinoid receptor 1 protein (1-116AA).

**Storage:**

Preservative: 0.03% Proclin 300. Constituents: 50% Glycerol, 0.01M PBS, PH 7.4

## Product Images

---



Western Blot. Positive WB detected in: A549 whole cell lysate, HeLa whole cell lysate, 293 whole cell lysate. All lanes: CNR1 antibody at 1:2000. Secondary. Goat polyclonal to rabbit IgG at 1/50000 dilution. Predicted band size: 53, 46, 50 kDa. Observed band size: 53 kDa.