

Product Information

Size:

50ul

Reactivity:

Human

Source:

Rabbit

Isotype:

IgG

Applications:

ELISA, WB

Recommended dilutions:

ELISA:1:2000-1:10000, WB:1:1000-1:5000

Protein Background:

This is one of the several different receptors for 5-hydroxytryptamine (serotonin), a biogenic hormone that functions as a neurotransmitter, a hormone, and a mitogen. This receptor is a ligand-gated ion channel, which when activated causes fast, depolarizing responses. It is a cation-specific, but otherwise relatively nonselective, ion channel.

Gene ID:

HTR3E

Uniprot

A5X5Y0

Synonyms:

5-hydroxytryptamine receptor 3E (5-HT3-E) (5-HT3E) (Serotonin receptor 3E), HTR3E

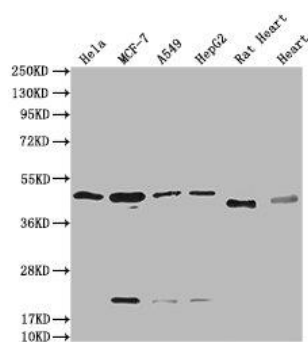
Immunogen:

Recombinant Human 5-hydroxytryptamine receptor 3E protein (26-248AA).

Storage:

Preservative: 0.03% Proclin 300. Constituents: 50% Glycerol, 0.01M PBS, pH 7.4

Product Images



Western Blot. Positive WB detected in: HeLa whole cell lysate, MCF-7 whole cell lysate, A549 whole cell lysate, HepG2 whole cell lysate, Rat Heart tissue, Mouse Heart tissue. All lanes: HTR3E antibody at 1:2000. Secondary. Goat polyclonal to rabbit IgG at 1/50000 dilution. Predicted band size: 52, 50, 53, 51, 54 kDa. Observed band size: 50 kDa.