

PACO64051

Product Information

Size:

50ul

Reactivity:

Human

Source:

Rabbit

Isotype:

IgG

Applications:

ELISA, WB, IHC

Recommended dilutions:

ELISA:1:2000-1:10000, WB:1:1000-1:5000,
IHC:1:200-1:500

Protein Background:

cytosol, intracellular membrane-bounded organelle, identical protein binding, ribose-5-phosphate isomerase activity, D-ribose metabolic process, pentose-phosphate shunt, pentose-phosphate shunt, non-oxidative branch.

Gene ID:

RPIA

Uniprot

P49247

Synonyms:

Ribose-5-phosphate isomerase (EC 5.3.1.6) (Phosphoriboisomerase), RPIA, RPI

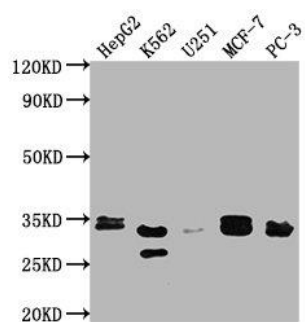
Immunogen:

Recombinant Human Ribose-5-phosphate isomerase protein (1-311AA).

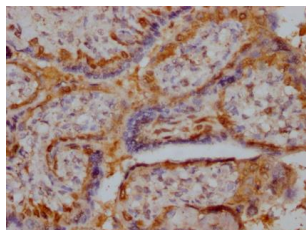
Storage:

Preservative: 0.03% Proclin 300. Constituents: 50% Glycerol, 0.01M PBS, pH 7.4

Product Images



Western Blot. Positive WB detected in: HepG2 whole cell lysate, K562 whole cell lysate, U251 whole cell lysate, MCF-7 whole cell lysate, PC-3 whole cell lysate. All lanes: RPIA antibody at 1:2000. Secondary. Goat polyclonal to rabbit IgG at 1/50000 dilution. Predicted band size: 34 kDa. Observed band size: 33 kDa.



IHC image of PACO64051 diluted at 1:400 and staining in paraffin-embedded human placenta tissue performed on a Leica Bond™ system. After dewaxing and hydration, antigen retrieval was mediated by high pressure in a citrate buffer (pH 6.0). Section was blocked with 10% normal goat serum 30min at RT. Then primary antibody (1% BSA) was incubated at 4°C overnight. The primary is detected by a Goat anti-rabbit IgG labeled by HRP and visualized using 0.05% DAB.