

Product Information

Size:

50ul

Reactivity:

Human

Source:

Rabbit

Isotype:

IgG

Applications:

ELISA, WB

Recommended dilutions:

ELISA:1:2000-1:10000, WB:1:500-1:2000

Protein Background:

Cell surface receptor for SEMA4C, SEMA4D and SEMA4G that plays an important role in cell-cell signaling. Binding to class 4 semaphorins promotes downstream activation of RHOA and phosphorylation of ERBB2 at 'Tyr-1248'. Required for normal differentiation and migration of neuronal cells during brain corticogenesis and for normal embryonic brain development. Regulates the migration of cerebellar granule cells in the developing brain. Plays a role in RHOA activation and subsequent changes of the actin cytoskeleton. Plays a role in axon guidance, invasive growth and cell migration. May modulate the activity of RAC1 and CDC42. Down-regulates macrophage migration in wound-healing assays (in vitro).

Gene ID:

PLXNB2

Uniprot

O15031

Synonyms:

Plexin-B2 (MM1), PLXNB2, KIAA0315

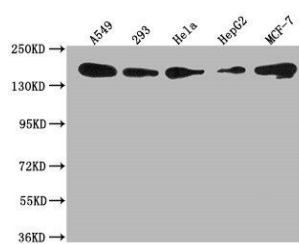
Immunogen:

Recombinant Human Inhibitor of nuclear factor kappa-B kinase-interacting protein (1458-1673AA).

Storage:

Preservative: 0.03% Proclin 300. Constituents: 50% Glycerol, 0.01M PBS, pH 7.4

Product Images



Western Blot. Positive WB detected in: A549 whole cell lysate, 293 whole cell lysate, HeLa whole cell lysate, HepG2 whole cell lysate, MCF-7 whole cell lysate. All lanes: PLXNB2 antibody at 1:1000. Secondary. Goat polyclonal to rabbit IgG at 1/50000 dilution. Predicted band size: 206 kDa. Observed band size: 206 kDa.