

PRAMEF6 Antibody



PACO63963

Product Information

Size:

50ul

Reactivity:

Human

Source:

Rabbit

Isotype:

IgG

Applications:

ELISA, WB

Recommended dilutions:

ELISA:1:2000-1:10000, WB:1:1000-1:5000

Protein Background:**Gene ID:**

PRAMEF6

Uniprot

Q5VXH4

Synonyms:

PRAME family member 6, PRAMEF6

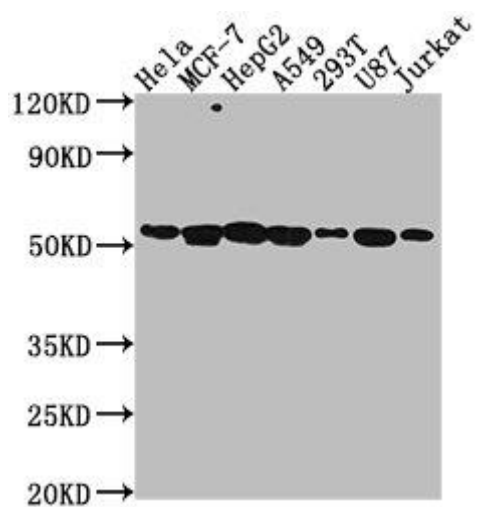
Immunogen:

Recombinant Human PRAME family member 6 protein (209-476AA).

Storage:

Preservative: 0.03% Proclin 300. Constituents: 50% Glycerol, 0.01M PBS, pH 7.4

Product Images



Western Blot. Positive WB detected in: HeLa whole cell lysate, MCF-7 whole cell lysate, HepG2 whole cell lysate, A549 whole cell lysate, 293T whole cell lysate, U87 whole cell lysate, Jurkat whole cell lysate. All lanes: PRAMEF6 antibody at 1:2000. Secondary. Goat polyclonal to rabbit IgG at 1/50000 dilution. Predicted band size: 55 kDa. Observed band size: 55 kDa.