

# CACNG6 Antibody



PACO63915

---

## Product Information

**Size:**

50ul

**Reactivity:**

Human

**Source:**

Rabbit

**Isotype:**

IgG

**Applications:**

ELISA, IF

**Recommended dilutions:**

ELISA:1:2000-1:10000, IF:1:50-1:200

**Protein Background:**

Thought to stabilize the calcium channel in an inactivated (closed) state.

**Gene ID:**

CACNG6

**Uniprot**

Q9BXT2

**Synonyms:**

Voltage-dependent calcium channel gamma-6 subunit (Neuronal voltage-gated calcium channel gamma-6 subunit), CACNG6

**Immunogen:**

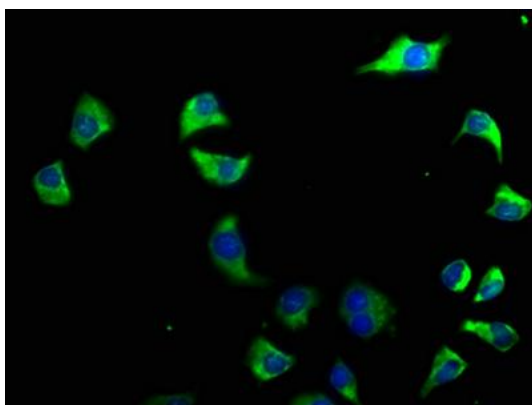
Peptide sequence from Human Voltage-dependent calcium channel gamma-6 subunit protein (22-39AA).

**Storage:**

Preservative: 0.03% Proclin 300. Constituents: 50% Glycerol, 0.01M PBS, pH 7.4

## Product Images

---



Immunofluorescence staining of A549 cells with PACO63915 at 1:50, counter-stained with DAPI. The cells were fixed in 4% formaldehyde, permeabilized using 0.2% Triton X-100 and blocked in 10% normal Goat Serum. The cells were then incubated with the antibody overnight at 4°C. The secondary antibody was Alexa Fluor 488-conjugated AffiniPure Goat Anti-Rabbit IgG(H+L).