

Product Information

Size:

50ul

Reactivity:

Human

Source:

Rabbit

Isotype:

IgG

Applications:

ELISA, IHC

Recommended dilutions:

ELISA:1:2000-1:10000, IHC:1:20-1:200

Protein Background:

Minus-end microtubule-dependent motor protein. Acts as a negative regulator of centrosome separation required to prevent premature centrosome separation during interphase. Required to maintain a centered nucleus to ensure that the spindle is stably oriented at the onset of mitosis. May also act as a negative regulator of amino acid, starvation-induced autophagy.

Gene ID:

KIF25

Uniprot

Q9UIL4

Synonyms:

Kinesin-like protein KIF25 (Kinesin-like protein 3), KIF25, KNSL3

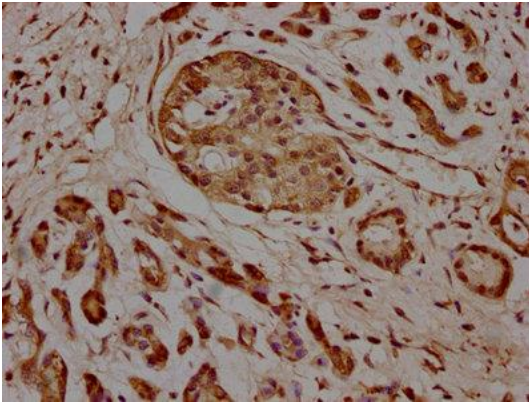
Immunogen:

Recombinant Human Kinesin-like protein KIF25 protein (1-262AA).

Storage:

Preservative: 0.03% Proclin 300. Constituents: 50% Glycerol, 0.01M PBS, pH 7.4

Product Images



IHC image of PACO63903 diluted at 1:100 and staining in paraffin-embedded human pancreatic cancer performed on a Leica Bond™ system. After dewaxing and hydration, antigen retrieval was mediated by high pressure in a citrate buffer (pH 6.0). Section was blocked with 10% normal goat serum 30min at RT. Then primary antibody (1% BSA) was incubated at 4°C overnight. The primary is detected by a biotinylated secondary antibody and visualized using an HRP conjugated SP system.