

Product Information

Size:

50ul

Reactivity:

Human

Source:

Rabbit

Isotype:

IgG

Applications:

ELISA, WB

Recommended dilutions:

ELISA:1:2000-1:10000, WB:1:500-1:2000

Protein Background:

Catalytically inactive phosphatase. Acts as a nuclear anchor for MAPK1/MAPK3 (ERK1/ERK2). Modulates cell-fate decisions and cell migration by spatiotemporal regulation of MAPK1/MAPK3 (ERK1/ERK2). Seems to play a role in spermiogenesis.

Gene ID:

STYX

Uniprot

Q8WUJ0

Synonyms:

Serine/threonine/tyrosine-interacting protein (Protein tyrosine phosphatase-like protein), STYX

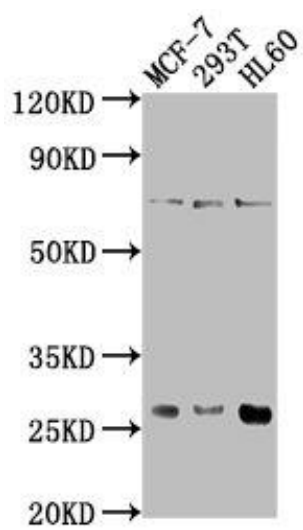
Immunogen:

Recombinant Human Serine/threonine/tyrosine-interacting protein (1-223AA).

Storage:

Preservative: 0.03% Proclin 300. Constituents: 50% Glycerol, 0.01M PBS, pH 7.4

Product Images



Western Blot. Positive WB detected in: MCF-7 whole cell lysate, 293T whole cell lysate, HL60 whole cell lysate. All lanes: STYX antibody at 1:1000. Secondary. Goat polyclonal to rabbit IgG at 1/50000 dilution. Predicted band size: 26 kDa. Observed band size: 26 kDa.