

PACO63819

Product Information

Size:

50ul

Reactivity:

Human

Source:

Rabbit

Isotype:

IgG

Applications:

ELISA, IF

Recommended dilutions:

ELISA:1:2000-1:10000, IF:1:50-1:200

Protein Background:

Activator of the NOTCH1 pathway. May mediate neuron-glia interaction during astrocytogenesis.

Gene ID:

DNER

Uniprot

Q8NFT8

Synonyms:

Delta and Notch-like epidermal growth factor-related receptor, DNER, BET

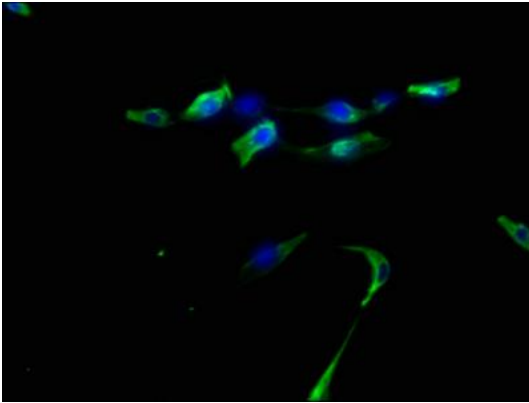
Immunogen:

Peptide sequence from Human Delta and Notch-like epidermal growth factor-related receptor protein (150-168AA).

Storage:

Preservative: 0.03% Proclin 300. Constituents: 50% Glycerol, 0.01M PBS, pH 7.4

Product Images



Immunofluorescence staining of U87 cells with PACO63819 at 1:50, counter-stained with DAPI. The cells were fixed in 4% formaldehyde, permeabilized using 0.2% Triton X-100 and blocked in 10% normal Goat Serum. The cells were then incubated with the antibody overnight at 4°C. The secondary antibody was Alexa Fluor 488-conjugated AffiniPure Goat Anti-Rabbit IgG(H+L).