

PAP1 Antibody



PACO63775

Product Information

Size:

50ul

Reactivity:

Arabidopsis thaliana

Source:

Rabbit

Isotype:

IgG

Applications:

ELISA, WB

Recommended dilutions:

ELISA:1:2000-1:10000, WB:1:1000-1:5000

Protein Background:

Probably involved in light/cold stress-related jasmonate (JA) biosynthesis. Contributes to the protection of photosystem II (PSII) against light stress.

Gene ID:

PAP1

Uniprot

O81439

Synonyms:

Probable plastid-lipid-associated protein 1, chloroplastic (AtPap1) (Fibrillin-1a) (Plastoglobulin 35) (AtPGL35), PAP1, FBN1a FIB1a PGL35

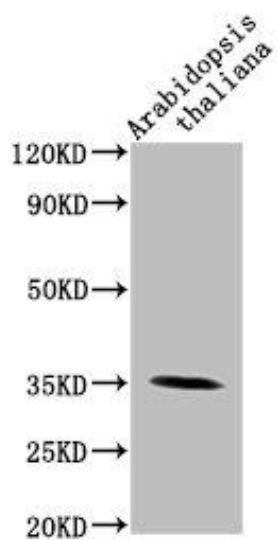
Immunogen:

Recombinant Arabidopsis thaliana Probable plastid-lipid-associated protein 1, chloroplastic protein (56-318AA).

Storage:

Preservative: 0.03% Proclin 300. Constituents: 50% Glycerol, 0.01M PBS, pH 7.4

Product Images



Western Blot. Positive WB detected in: Arabidopsis thaliana lysate. All lanes: PAP1 antibody at 1:2000. Secondary. Goat polyclonal to rabbit IgG at 1/50000 dilution. Predicted band size: 35 kDa. Observed band size: 35 kDa.