

# TRAPPC8 Antibody



PACO63743

---

## Product Information

**Size:**

50ul

**Reactivity:**

Human

**Source:**

Rabbit

**Isotype:**

IgG

**Applications:**

ELISA, IHC

**Recommended dilutions:**

ELISA:1:2000-1:10000, IHC:1:20-1:200

**Protein Background:**

May be involved in endoplasmic reticulum to Golgi apparatus trafficking at a very early stage.

**Gene ID:**

TRAPPC8

**Uniprot**

Q9Y2L5

**Synonyms:**

Trafficking protein particle complex subunit 8 (Protein TRS85 homolog), TRAPPC8, KIAA1012

**Immunogen:**

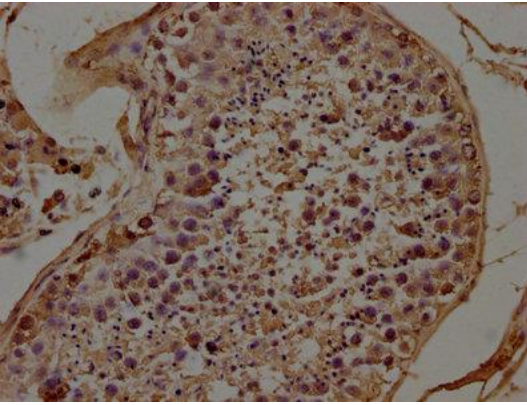
Recombinant Human Trafficking protein particle complex subunit 8 protein (1205-1435AA).

**Storage:**

Preservative: 0.03% Proclin 300. Constituents: 50% Glycerol, 0.01M PBS, pH 7.4

## Product Images

---



IHC image of PACO63743 diluted at 1:100 and staining in paraffin-embedded human testis tissue performed on a Leica Bond™ system. After dewaxing and hydration, antigen retrieval was mediated by high pressure in a citrate buffer (pH 6.0). Section was blocked with 10% normal goat serum 30min at RT. Then primary antibody (1% BSA) was incubated at 4°C overnight. The primary is detected by a biotinylated secondary antibody and visualized using an HRP conjugated SP system.