

### Product Information

**Size:**

50ul

**Reactivity:**

Human

**Source:**

Rabbit

**Isotype:**

IgG

**Applications:**

ELISA, IHC

**Recommended dilutions:**

ELISA:1:2000-1:10000, IHC:1:20-1:200

**Protein Background:**

Guanine nucleotide exchange factor (GEF) which may activate RAB9A and RAB9B. Promotes the exchange of GDP to GTP, converting inactive GDP-bound Rab proteins into their active GTP-bound form. May be involved in cytoskeletal organization and tumorigenicity. Isoform 1 seems to be involved in a signaling transduction pathway leading to activation of MAPK1/ERK2. Isoform 3 may block ERK2 activation stimulated by ABL1. Isoform 3 may alter cell morphology and cell growth.

**Gene ID:**

ST5

**Uniprot**

P78524

**Synonyms:**

Suppression of tumorigenicity 5 protein (DENN domain-containing protein 2B) (HeLa tumor suppression 1), ST5, DENND2B HTS1

**Immunogen:**

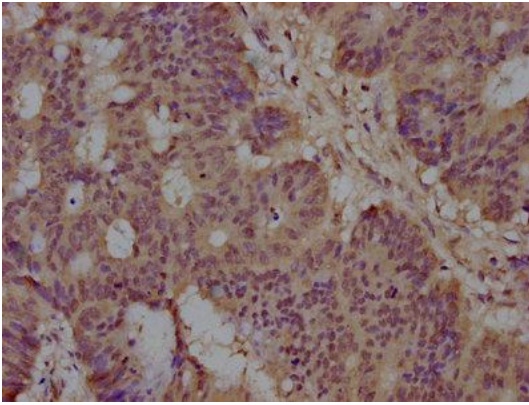
Peptide sequence from Human Suppression of tumorigenicity 5 protein (68-88AA).

**Storage:**

Preservative: 0.03% Proclin 300. Constituents: 50% Glycerol, 0.01M PBS, pH 7.4

## Product Images

---



IHC image of PACO63711 diluted at 1:100 and staining in paraffin-embedded human colon cancer performed on a Leica Bond™ system. After dewaxing and hydration, antigen retrieval was mediated by high pressure in a citrate buffer (pH 6.0). Section was blocked with 10% normal goat serum 30min at RT. Then primary antibody (1% BSA) was incubated at 4°C overnight. The primary is detected by a biotinylated secondary antibody and visualized using an HRP conjugated SP system.