

EXOC8 Antibody



PACO63651

Product Information

Size:

50ul

Reactivity:

Human

Source:

Rabbit

Isotype:

IgG

Applications:

ELISA, IF

Recommended dilutions:

ELISA:1:2000-1:10000, IF:1:50-1:200

Protein Background:

Component of the exocyst complex involved in the docking of exocytic vesicles with fusion sites on the plasma membrane.

Gene ID:

EXOC8

Uniprot

Q8IYI6

Synonyms:

Exocyst complex component 8 (Exocyst complex 84 kDa subunit), EXOC8

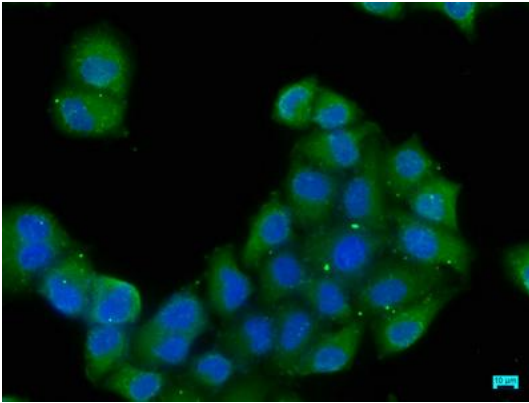
Immunogen:

Recombinant Human Exocyst complex component 8 protein (508-725AA).

Storage:

Preservative: 0.03% Proclin 300. Constituents: 50% Glycerol, 0.01M PBS, pH 7.4

Product Images



Immunofluorescence staining of HeLa cells with PACO63651 at 1:50, counter-stained with DAPI. The cells were fixed in 4% formaldehyde, permeabilized using 0.2% Triton X-100 and blocked in 10% normal Goat Serum. The cells were then incubated with the antibody overnight at 4°C. The secondary antibody was Alexa Fluor 488-conjugated AffiniPure Goat Anti-Rabbit IgG(H+L).