

CAMK2N1 Antibody



PACO63627

Product Information

Size:

50ul

Reactivity:

Human

Source:

Rabbit

Isotype:

IgG

Applications:

ELISA, IF

Recommended dilutions:

ELISA:1:2000-1:10000, IF:1:50-1:200

Protein Background:

Potent and specific inhibitor of CaM-kinase II (CAMK2).

Gene ID:

CAMK2N1

Uniprot

Q7Z7J9

Synonyms:

Calcium/calmodulin-dependent protein kinase II inhibitor 1 (CaMKII inhibitory protein alpha) (CaMKIIN-alpha), CAMK2N1

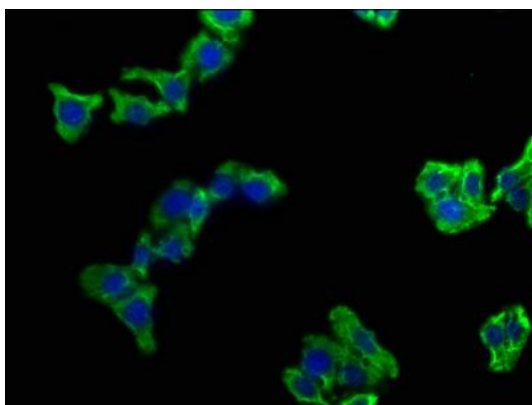
Immunogen:

Peptide sequence from Human Calcium/calmodulin-dependent protein kinase II inhibitor 1 protein (9-27AA).

Storage:

Preservative: 0.03% Proclin 300. Constituents: 50% Glycerol, 0.01M PBS, pH 7.4

Product Images



Immunofluorescence staining of HepG2 cells with PACO63627 at 1:100, counter-stained with DAPI. The cells were fixed in 4% formaldehyde, permeabilized using 0.2% Triton X-100 and blocked in 10% normal Goat Serum. The cells were then incubated with the antibody overnight at 4°C. The secondary antibody was Alexa Fluor 488-conjugated AffiniPure Goat Anti-Rabbit IgG(H+L).