

PACO63611

Product Information

Size:

50ul

Reactivity:

Human

Source:

Rabbit

Isotype:

IgG

Applications:

ELISA, WB

Recommended dilutions:

ELISA:1:2000-1:10000, WB:1:1000-1:5000

Protein Background:

Probable large-conductance Ca²⁺-activated chloride channel. May play a role in Ca²⁺ signal transduction. May be involved in cell proliferation and cell aggregation.

Gene ID:

TTYH2

Uniprot

Q9BSA4

Synonyms:

Protein tweety homolog 2, hTTY2, TTYH2, C17orf29

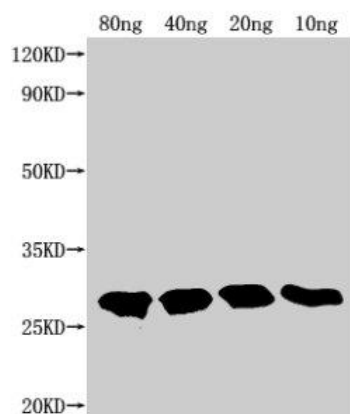
Immunogen:

Recombinant Human Protein tweety homolog 2 protein (455-534AA).

Storage:

Preservative: 0.03% Proclin 300. Constituents: 50% Glycerol, 0.01M PBS, pH 7.4

Product Images



Western Blot. Positive WB detected in Recombinant protein. All lanes: TTYH2 antibody at 1:2000. Secondary. Goat polyclonal to rabbit IgG at 1/50000 dilution. Predicted band size: 22.9 kDa. Observed band size: 28 kDa.