

PACO63607

---

## Product Information

**Size:**

50ul

**Reactivity:**

Arabidopsis thaliana

**Source:**

Rabbit

**Isotype:**

IgG

**Applications:**

ELISA, WB

**Recommended dilutions:**

ELISA:1:2000-1:10000, WB:1:500-1:2000

**Protein Background:**

1-aminocyclopropane-1-carboxylate synthase (ACS) enzymes catalyze the conversion of S-adenosyl-L-methionine (SAM) into 1-aminocyclopropane-1-carboxylate (ACC), a direct precursor of ethylene.

**Gene ID:**

ACS8

**Uniprot**

Q9T065

**Synonyms:**

1-aminocyclopropane-1-carboxylate synthase 8, ACC synthase 8, S-adenosyl-L-methionine methylthioadenosine-lyase 8, ACS8

**Immunogen:**

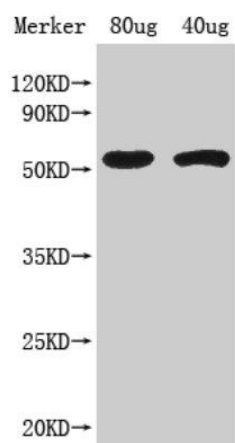
Recombinant Arabidopsis thaliana 1-aminocyclopropane-1-carboxylate synthase 8 protein (1-469AA).

**Storage:**

Preservative: 0.03% Proclin 300. Constituents: 50% Glycerol, 0.01M PBS, pH 7.4

## Product Images

---



Western Blot. Positive WB detected in Recombinant protein. All lanes: ACS8 antibody at 1:1000. Secondary. Goat polyclonal to rabbit IgG at 1/50000 dilution. Predicted band size: 59 kDa. Observed band size: 59 kDa.