

# ZIP1 Antibody



PACO63587

---

## Product Information

**Size:**

50ul

**Reactivity:**

Saccharomyces cerevisiae

**Source:**

Rabbit

**Isotype:**

IgG

**Applications:**

ELISA, WB

**Recommended dilutions:**

ELISA:1:2000-1:10000, WB:1:1000-1:5000

**Protein Background:**

Required for meiotic chromosome synapsis and cell cycle progression. May act as a molecular zipper to bring homologous chromosomes in close apposition. ZIP1 may encode the transverse filaments of the synaptonemal complex.

**Gene ID:**

ZIP1

**Uniprot**

P31111

**Synonyms:**

Synaptonemal complex protein ZIP1, ZIP1

**Immunogen:**

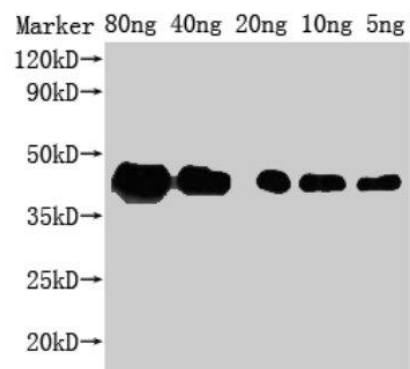
Recombinant Saccharomyces cerevisiae Synaptonemal complex protein ZIP1 protein (1-227AA).

**Storage:**

Preservative: 0.03% Proclin 300. Constituents: 50% Glycerol, 0.01M PBS, pH 7.4

## Product Images

---



Western Blot. Positive WB detected in Recombinant protein. All lanes: ZIP1 antibody at 1:2000. Secondary. Goat polyclonal to rabbit IgG at 1/50000 dilution. Predicted band size: 29 kDa. Observed band size: 43 kDa.