

PACO63583

---

## Product Information

**Size:**

50ul

**Reactivity:**

Escherichia coli

**Source:**

Rabbit

**Isotype:**

IgG

**Applications:**

ELISA, WB

**Recommended dilutions:**

ELISA:1:2000-1:10000, WB:1:2000-1:10000

**Protein Background:**

Involved in the control of the switch from cell motility to adhesion via regulation of cellular levels of cyclic-di-GMP (c-di-GMP). Part of a signaling cascade that regulates curli biosynthesis. The cascade is composed of two c-di-GMP control modules, in which c-di-GMP controlled by the DgcEPdeH pair (module I) regulates the activity of the DgcMPdeR pair (module II), which in turn regulates activity of the transcription factor MlrA and expression of the master biofilm regulator csgD. Effect on flagella is controlled via the c-di-GMP-binding flagellar brake protein YcgR.

**Gene ID:**

pdeH

**Uniprot**

P37646

**Synonyms:**

Cyclic di-GMP phosphodiesterase PdeH, pdeH, yhjH

**Immunogen:**

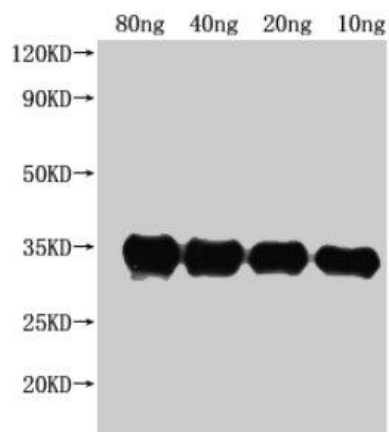
Recombinant Escherichia coli Cyclic di-GMP phosphodiesterase PdeH protein (1-255AA).

**Storage:**

Preservative: 0.03% Proclin 300. Constituents: 50% Glycerol, 0.01M PBS, pH 7.4

## Product Images

---



Western Blot. Positive WB detected in Recombinant protein. All lanes: pdeH antibody at 1:2500. Secondary. Goat polyclonal to rabbit IgG at 1/50000 dilution. Predicted band size: 35 kDa. Observed band size: 34 kDa.