

Met Antibody



PACO63551

Product Information

Size:

50ul

Reactivity:

Locusta migratoria

Source:

Rabbit

Isotype:

IgG

Applications:

ELISA, WB

Recommended dilutions:

ELISA:1:2000-1:10000, WB:1:1000-1:5000

Protein Background:

Gene ID:

Met

Uniprot

V5KYY7

Synonyms:

Met protein, Met

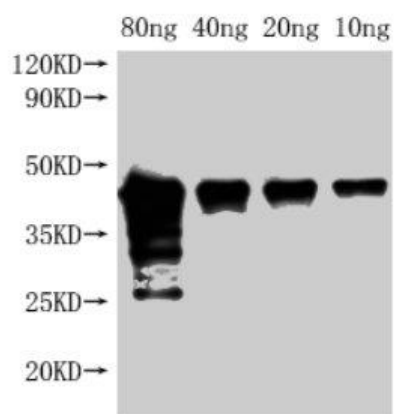
Immunogen:

Recombinant Locusta migratoria Met protein (1-329AA).

Storage:

Preservative: 0.03% Proclin 300. Constituents: 50% Glycerol, 0.01M PBS, pH 7.4

Product Images



Western Blot. Positive WB detected in Recombinant protein. All lanes: Met antibody at 1:2000. Secondary. Goat polyclonal to rabbit IgG at 1/50000 dilution. Predicted band size: 42 kDa. Observed band size: 45 kDa.