

Slfn9 Antibody



PACO63547

Product Information

Size:

50ul

Reactivity:

Mouse

Source:

Rabbit

Isotype:

IgG

Applications:

ELISA, WB

Recommended dilutions:

ELISA:1:2000-1:10000, WB:1:1000-1:5000

Protein Background:

Endoribonuclease that cleaves tRNAs and rRNAs.

Gene ID:

Slfn9

Uniprot

B1ARD6

Synonyms:

Schlafen family member 9, Schlafen-9, Slfn9

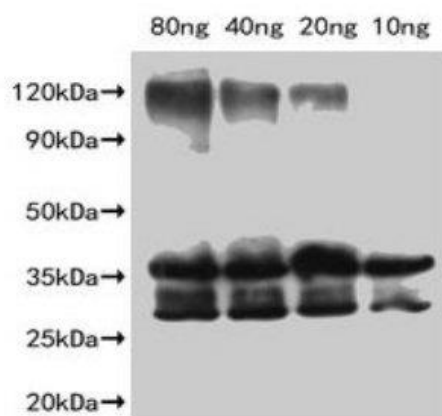
Immunogen:

Recombinant Mouse Schlafen family member 9 protein (1-83AA).

Storage:

Preservative: 0.03% Proclin 300. Constituents: 50% Glycerol, 0.01M PBS, pH 7.4

Product Images



Western Blot. Positive WB detected in Recombinant protein. All lanes: Slfn9 antibody at 1:2000. Secondary. Goat polyclonal to rabbit IgG at 1/50000 dilution. Predicted band size: 36.2 kDa. Observed band size: 35 kDa.