

PACO63539

Product Information

Size:

50ul

Reactivity:

Human

Source:

Rabbit

Isotype:

IgG

Applications:

ELISA, WB

Recommended dilutions:

ELISA:1:2000-1:10000, WB:1:1000-1:5000

Protein Background:

Subunit of the peripheral V1 complex of vacuolar ATPase. Vacuolar ATPase is responsible for acidifying a variety of intracellular compartments in eukaryotic cells, thus providing most of the energy required for transport processes in the vacuolar system. May play a role in cilium biogenesis through regulation of the transport and the localization of proteins to the cilium.

Gene ID:

ATP6V1D

Uniprot

Q9Y5K8

Synonyms:

V-type proton ATPase subunit D (V-ATPase subunit D) (V-ATPase 28 kDa accessory protein) (Vacuolar proton pump subunit D), ATP6V1D, ATP6M VATD

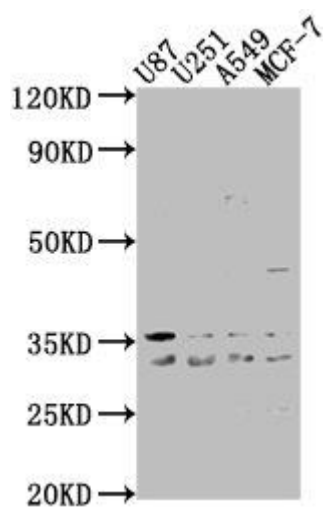
Immunogen:

Recombinant Human V-type proton ATPase subunit D protein (1-247AA).

Storage:

Preservative: 0.03% Proclin 300. Constituents: 50% Glycerol, 0.01M PBS, pH 7.4

Product Images



Western Blot. Positive WB detected in: U87 whole cell lysate, U251 whole cell lysate, A549 whole cell lysate, MCF-7 whole cell lysate. All lanes: ATP6V1D antibody at 1:2000. Secondary. Goat polyclonal to rabbit IgG at 1/50000 dilution. Predicted band size: 29 kDa. Observed band size: 29 kDa.