

Product Information

Size:

50ul

Reactivity:

Human

Source:

Rabbit

Isotype:

IgG

Applications:

ELISA, IHC

Recommended dilutions:

ELISA:1:2000-1:10000, IHC:1:20-1:200

Protein Background:

Acts as a neurotrophic factor in postnatal mature neurons enhancing neuronal survival. Promotes cell proliferation and neurogenesis in undifferentiated neural pro-genitor cells at the embryonic stage and inhibits differentiation of astrocyte. Its neurotrophic activity is exerted via MAPK1/ERK2, MAPK3/ERK1 and AKT1/AKT pathways. Neurotrophic activity is enhanced by binding to heme. Acts also as an anorexigenic neurotrophic factor that contributes to energy balance. Plays a role in the human tumorigenesis.

Gene ID:

NENF

Uniprot

Q9UMX5

Synonyms:

Neudesin (Cell immortalization-related protein 2) (Neuron-derived neurotrophic factor) (Protein GIG47) (Secreted protein of unknown function) (SPUF protein), NENF, CIR2 SPUF

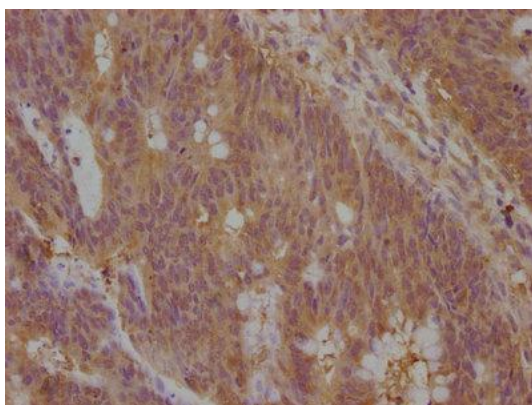
Immunogen:

Peptide sequence from Human Neudesin protein (149-167AA).

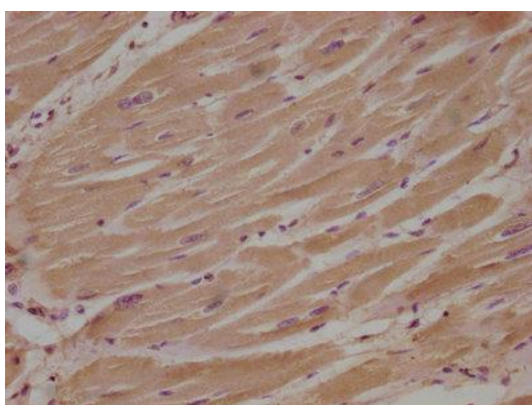
Storage:

Preservative: 0.03% Proclin 300. Constituents: 50% Glycerol, 0.01M PBS, pH 7.4

Product Images



IHC image of PACO63527 diluted at 1:100 and staining in paraffin-embedded human colon cancer performed on a Leica Bond™ system. After dewaxing and hydration, antigen retrieval was mediated by high pressure in a citrate buffer (pH 6.0). Section was blocked with 10% normal goat serum 30min at RT. Then primary antibody (1% BSA) was incubated at 4°C overnight. The primary is detected by a biotinylated secondary antibody and visualized using an HRP conjugated SP system.



IHC image of PACO63527 diluted at 1:100 and staining in paraffin-embedded human heart tissue performed on a Leica Bond™ system. After dewaxing and hydration, antigen retrieval was mediated by high pressure in a citrate buffer (pH 6.0). Section was blocked with 10% normal goat serum 30min at RT. Then primary antibody (1% BSA) was incubated at 4°C overnight. The primary is detected by a biotinylated secondary antibody and visualized using an HRP conjugated SP system.