

PACO63523

---

## Product Information

**Size:**

50ul

**Reactivity:**

Human

**Source:**

Rabbit

**Isotype:**

IgG

**Applications:**

ELISA, IHC

**Recommended dilutions:**

ELISA:1:2000-1:10000, IHC:1:20-1:200

**Protein Background:**

Involved in neural development, regulating the establishment of proper connectivity within the nervous system. May function as a cellular signal transducer.

**Gene ID:**

TENM1

**Uniprot**

Q9UKZ4

**Synonyms:**

Teneurin-1 (Ten-1) (Protein Odd Oz/ten-m homolog 1) (Tenascin-M1) (Ten-m1) (Teneurin transmembrane protein 1) [Cleaved into: Ten-1 intracellular domain (IDten-1) (Ten-1 ICD); Teneurin C-terminal-associated peptide (TCPA-1) (Ten-1 extracellular domain) (Ten-1 ECD)], TENM1, ODZ1 TNM1

**Immunogen:**

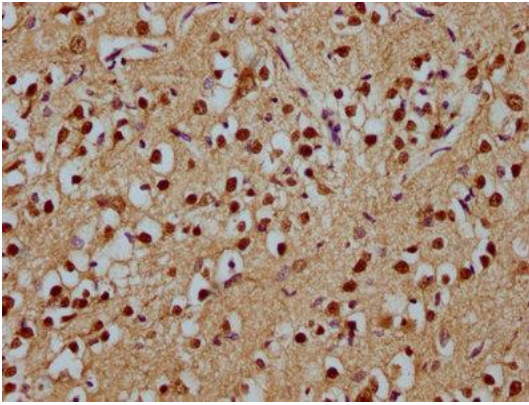
Recombinant Human Teneurin-1 protein (1-241AA).

**Storage:**

Preservative: 0.03% Proclin 300. Constituents: 50% Glycerol, 0.01M PBS, pH 7.4

## Product Images

---



IHC image of PACO63523 diluted at 1:100 and staining in paraffin-embedded human brain tissue performed on a Leica Bond™ system. After dewaxing and hydration, antigen retrieval was mediated by high pressure in a citrate buffer (pH 6.0). Section was blocked with 10% normal goat serum 30min at RT. Then primary antibody (1% BSA) was incubated at 4°C overnight. The primary is detected by a biotinylated secondary antibody and visualized using an HRP conjugated SP system.