

Product Information

Size:

50ul

Reactivity:

Human

Source:

Rabbit

Isotype:

IgG

Applications:

ELISA, IHC

Recommended dilutions:

ELISA:1:2000-1:10000, IHC:1:20-1:200

Protein Background:

Component of the ESCRT-II complex (endosomal sorting complex required for transport II), which is required for multivesicular body (MVB) formation and sorting of endosomal cargo proteins into MVBs. The MVB pathway mediates delivery of transmembrane proteins into the lumen of the lysosome for degradation. The ESCRT-II complex is probably involved in the recruitment of the ESCRT-III complex. Its ability to bind ubiquitin probably plays a role in endosomal sorting of ubiquitinated cargo proteins by ESCRT complexes. The ESCRT-II complex may also play a role in transcription regulation, possibly via its interaction with ELL. Binds phosphoinositides such as PtdIns(3,4,5)P3.

Gene ID:

VPS36

Uniprot

Q86VN1

Synonyms:

Vacuolar protein-sorting-associated protein 36 (ELL-associated protein of 45 kDa) (ESCRT-II complex subunit VPS36), VPS36, C13orf9 EAP45

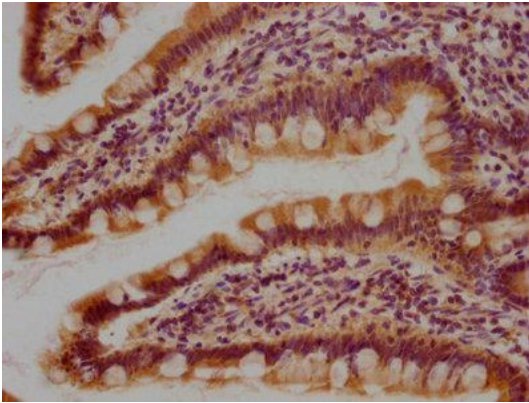
Immunogen:

Peptide sequence from Human Vacuolar protein-sorting-associated protein 36 protein (87-105AA).

Storage:

Preservative: 0.03% Proclin 300. Constituents: 50% Glycerol, 0.01M PBS, pH 7.4

Product Images



IHC image of PACO63439 diluted at 1:100 and staining in paraffin-embedded human small intestine tissue performed on a Leica Bond™ system. After dewaxing and hydration, antigen retrieval was mediated by high pressure in a citrate buffer (pH 6.0). Section was blocked with 10% normal goat serum 30min at RT. Then primary antibody (1% BSA) was incubated at 4°C overnight. The primary is detected by a biotinylated secondary antibody and visualized using an HRP conjugated SP system.