

## Product Information

**Size:**

50ul

**Reactivity:**

Human

**Source:**

Rabbit

**Isotype:**

IgG

**Applications:**

ELISA, WB

**Recommended dilutions:**

ELISA:1:2000-1:10000, WB:1:1000-1:5000

**Protein Background:**

Deubiquitinating enzyme that removes conjugated ubiquitin from specific proteins to regulate different cellular processes that may include cell proliferation, progression through the cell cycle, cell migration, and the cellular response to viral infection. Seems to be non-functional in the regulation of apoptosis.

**Gene ID:**

USP17L6P

**Uniprot**

Q6QN14

**Synonyms:**

Ubiquitin carboxyl-terminal hydrolase 17-like protein 6 (EC 3.4.19.12) (Deubiquitinating enzyme 17-like protein 6) (Ubiquitin thioesterase 17-like protein 6) (Ubiquitin-specific-processing protease 17-like protein 6), USP17L6P, USP17C USP17D USP17N

**Immunogen:**

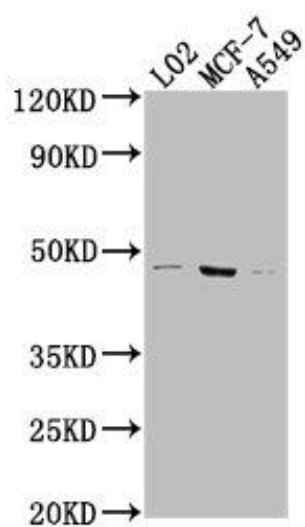
Recombinant Human Ubiquitin carboxyl-terminal hydrolase 17-like protein 6 protein (136-398AA).

**Storage:**

Preservative: 0.03% Proclin 300. Constituents: 50% Glycerol, 0.01M PBS, pH 7.4

## Product Images

---



Western Blot. Positive WB detected in: LO2 whole cell lysate, MCF-7 whole cell lysate, A549 whole cell lysate. All lanes: USP17L6P antibody at 1:2000. Secondary. Goat polyclonal to rabbit IgG at 1/50000 dilution. Predicted band size: 45 kDa. Observed band size: 45 kDa.