

WDR73 Antibody



PACO63427

Product Information

Size:

50ul

Reactivity:

Human

Source:

Rabbit

Isotype:

IgG

Applications:

ELISA, WB, IHC, IF

Recommended dilutions:

ELISA:1:2000-1:10000, WB:1:500-1:2000,
IHC:1:20-1:200, IF:1:50-1:200

Protein Background:

May play a role in the regulation of microtubule organization and dynamics.

Gene ID:

WDR73

Uniprot

Q6P4I2

Synonyms:

WD repeat-containing protein 73, WDR73

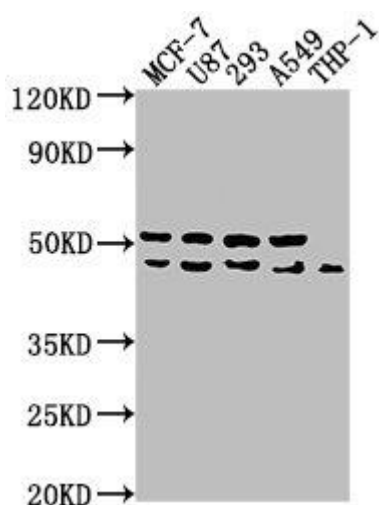
Immunogen:

Recombinant Human WD repeat-containing protein 73 protein (163-366AA).

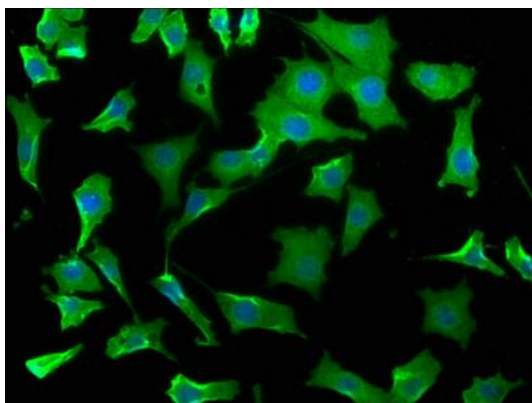
Storage:

Preservative: 0.03% Proclin 300. Constituents: 50% Glycerol, 0.01M PBS, pH 7.4

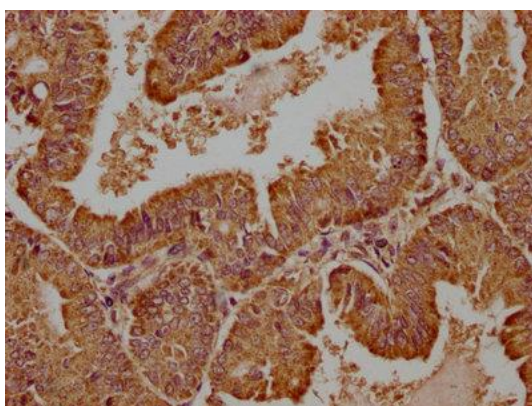
Product Images



Western Blot. Positive WB detected in: MCF-7 whole cell lysate, U87 whole cell lysate, 293 whole cell lysate, A549 whole cell lysate, THP-1 whole cell lysate. All lanes: WDR73 antibody at 1:1000. Secondary: Goat polyclonal to rabbit IgG at 1/50000 dilution. Predicted band size: 42 kDa. Observed band size: 42 kDa.



Immunofluorescence staining of SH-SY5Y cells with PACO63427 at 1:50, counter-stained with DAPI. The cells were fixed in 4% formaldehyde, permeabilized using 0.2% Triton X-100 and blocked in 10% normal Goat Serum. The cells were then incubated with the antibody overnight at 4°C. The secondary antibody was Alexa Fluor 488-conjugated AffiniPure Goat Anti-Rabbit IgG(H+L).



IHC image of PACO63427 diluted at 1:100 and staining in paraffin-embedded human endometrial cancer performed on a Leica Bond™ system. After dewaxing and hydration, antigen retrieval was mediated by high pressure in a citrate buffer (pH 6.0). Section was blocked with 10% normal goat serum 30min at RT. Then primary antibody (1% BSA) was incubated at 4°C overnight. The primary is detected by a biotinylated secondary antibody and visualized using an HRP conjugated SP system.