

PACO63411

Product Information

Size:

50ul

Reactivity:

Human

Source:

Rabbit

Isotype:

IgG

Applications:

ELISA, IHC

Recommended dilutions:

ELISA:1:2000-1:10000, IHC:1:20-1:200

Protein Background:

cytoplasm, protein kinase inhibitor activity, cytokine-mediated signaling pathway, negative regulation of JAK-STAT cascade, negative regulation of protein kinase activity.

Gene ID:

LRRC3C

Uniprot

A6NJW4

Synonyms:

Leucine-rich repeat-containing protein 3C, LRRC3C

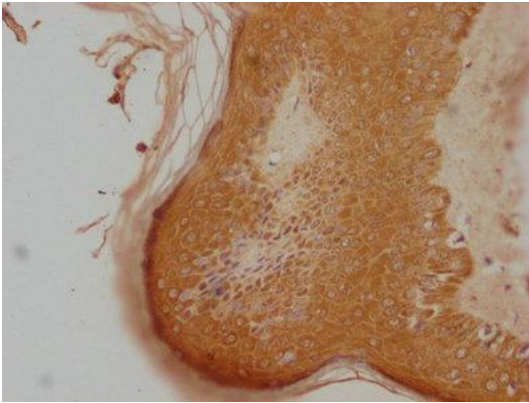
Immunogen:

Recombinant Human Leucine-rich repeat-containing protein 3C protein (42-224AA).

Storage:

Preservative: 0.03% Proclin 300. Constituents: 50% Glycerol, 0.01M PBS, pH 7.4

Product Images



IHC image of PACO63411 diluted at 1:100 and staining in paraffin-embedded human skin tissue performed on a Leica Bond™ system. After dewaxing and hydration, antigen retrieval was mediated by high pressure in a citrate buffer (pH 6.0). Section was blocked with 10% normal goat serum 30min at RT. Then primary antibody (1% BSA) was incubated at 4°C overnight. The primary is detected by a biotinylated secondary antibody and visualized using an HRP conjugated SP system.