

PRAMEF17 Antibody



PACO63371

Product Information

Size:

50ul

Reactivity:

Human

Source:

Rabbit

Isotype:

IgG

Applications:

ELISA, WB

Recommended dilutions:

ELISA:1:2000-1:10000, WB:1:1000-1:5000

Protein Background:

Gene ID:

PRAMEF17

Uniprot

Q5VTA0

Synonyms:

PRAME family member 17, PRAMEF17

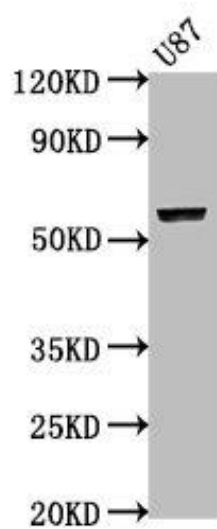
Immunogen:

Recombinant Human PRAME family member 17 protein (69-259AA).

Storage:

Preservative: 0.03% Proclin 300. Constituents: 50% Glycerol, 0.01M PBS, pH 7.4

Product Images



Western Blot. Positive WB detected in: U87 whole cell lysate. All lanes: PRAMEF17 antibody at 1:2000. Secondary. Goat polyclonal to rabbit IgG at 1/50000 dilution. Predicted band size: 55 kDa. Observed band size: 55 kDa.