

Product Information

Size:

50ul

Reactivity:

Human

Source:

Rabbit

Isotype:

IgG

Applications:

ELISA, WB

Recommended dilutions:

ELISA:1:2000-1:10000, WB:1:1000-1:5000

Protein Background:

Transcription factor for the thyroid-specific expression of the genes exclusively expressed in the thyroid cell type, maintaining the functional differentiation of such cells.

Gene ID:

PAX8

Uniprot

Q06710

Synonyms:

Paired box protein Pax-8, PAX8

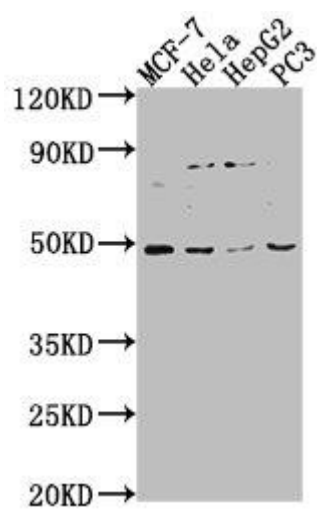
Immunogen:

Recombinant Human Paired box protein Pax-8 protein (237-450AA).

Storage:

Preservative: 0.03% Proclin 300. Constituents: 50% Glycerol, 0.01M PBS, pH 7.4

Product Images



Western Blot. Positive WB detected in: MCF-7 whole cell lysate, HeLa whole cell lysate, HepG2 whole cell lysate, PC-3 whole cell lysate. All lanes: PAX8 antibody at 1:2000. Secondary. Goat polyclonal to rabbit IgG at 1/50000 dilution. Predicted band size: 49, 42, 44, 35, 32 kDa. Observed band size: 49 kDa.