

PACO63335

Product Information

Size:

50ul

Reactivity:

Human

Source:

Rabbit

Isotype:

IgG

Applications:

ELISA, WB, IHC

Recommended dilutions:

ELISA:1:2000-1:10000, WB:1:500-1:2000,
IHC:1:20-1:200

Protein Background:

May play a role in neuritogenesis, as well as in neuronal recovery and/or restructuring in the hippocampus following transient cerebral ischemia.

Gene ID:

LCHN

Uniprot

A4D1U4

Synonyms:

Protein LCHN, LCHN, KIAA1147

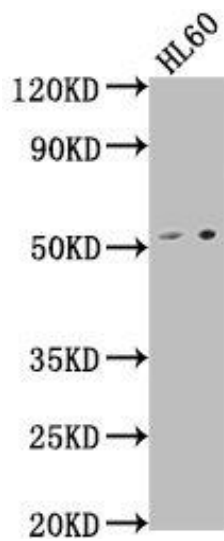
Immunogen:

Recombinant Human Protein LCHN protein (2-233AA).

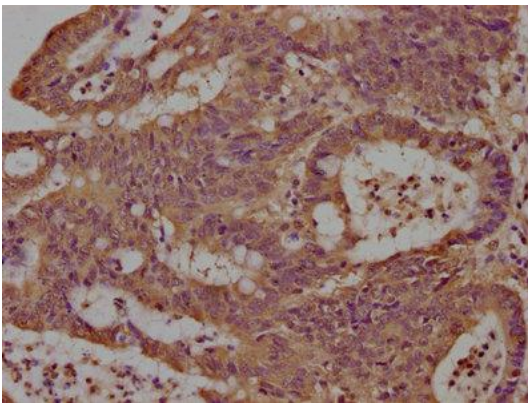
Storage:

Preservative: 0.03% Proclin 300. Constituents: 50% Glycerol, 0.01M PBS, pH 7.4

Product Images



Western Blot. Positive WB detected in: HL60 whole cell lysate. All lanes: LCHN antibody at 1:1000. Secondary. Goat polyclonal to rabbit IgG at 1/50000 dilution. Predicted band size: 52 kDa. Observed band size: 52 kDa.



IHC image of PACO63335 diluted at 1:100 and staining in paraffin-embedded human colon cancer performed on a Leica Bond™ system. After dewaxing and hydration, antigen retrieval was mediated by high pressure in a citrate buffer (pH 6.0). Section was blocked with 10% normal goat serum 30min at RT. Then primary antibody (1% BSA) was incubated at 4°C overnight. The primary is detected by a biotinylated secondary antibody and visualized using an HRP conjugated SP system.