

TJP2 Antibody



PACO63231

Product Information

Size:

50ul

Reactivity:

Human

Source:

Rabbit

Isotype:

IgG

Applications:

ELISA, WB, IHC, IF

Recommended dilutions:

ELISA:1:2000-1:10000, WB:1:1000-1:5000,
IHC:1:500-1:1000, IF:1:200-1:500

Protein Background:

Plays a role in tight junctions and adherens junctions.

Gene ID:

TJP2

Uniprot

Q9UDY2

Synonyms:

Tight junction protein ZO-2 (Tight junction protein 2) (Zona occludens protein 2) (Zonula occludens protein 2), TJP2, X104 ZO2

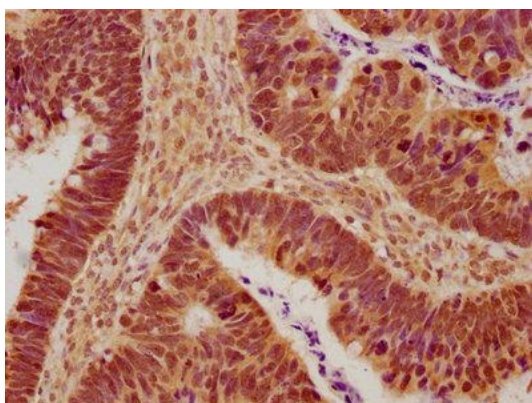
Immunogen:

Peptide sequence from Human Tight junction protein ZO-2 protein (1165-1183AA).

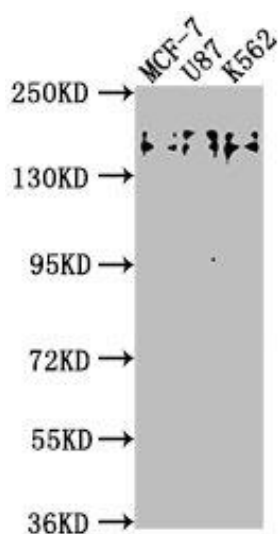
Storage:

Preservative: 0.03% Proclin 300. Constituents: 50% Glycerol, 0.01M PBS, pH 7.4

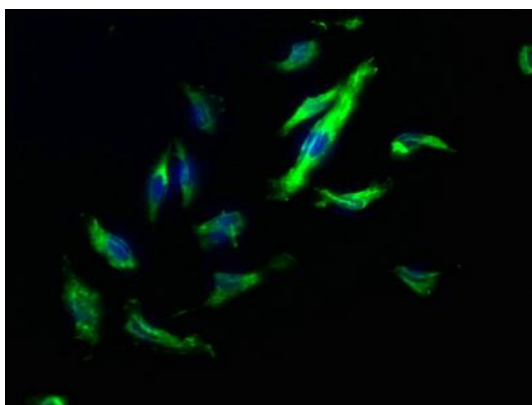
Product Images



IHC image of PACO63231 diluted at 1:600 and staining in paraffin-embedded human ovarian cancer performed on a Leica Bond™ system. After dewaxing and hydration, antigen retrieval was mediated by high pressure in a citrate buffer (pH 6.0). Section was blocked with 10% normal goat serum 30min at RT. Then primary antibody (1% BSA) was incubated at 4°C overnight. The primary is detected by a biotinylated secondary antibody and visualized using an HRP conjugated SP system.



Western Blot. Positive WB detected in: MCF-7 whole cell lysate, U87 whole cell lysate, K562 whole cell lysate. All lanes: TJP2 antibody at 1:2000. Secondary. Goat polyclonal to rabbit IgG at 1/50000 dilution. Predicted band size: 134, 118, 112, 132, 116, 131, 138 kDa. Observed band size: 150 kDa.



Immunofluorescence staining of U251 cells with PACO63231 at 1:200, counter-stained with DAPI. The cells were fixed in 4% formaldehyde, permeabilized using 0.2% Triton X-100 and blocked in 10% normal Goat Serum. The cells were then incubated with the antibody overnight at 4°C. The secondary antibody was Alexa Fluor 488-conjugated AffiniPure Goat Anti-Rabbit IgG(H+L).