

Product Information

Size:

50ul

Reactivity:

Human

Source:

Rabbit

Isotype:

IgG

Applications:

ELISA, IHC

Recommended dilutions:

ELISA:1:2000-1:10000, IHC:1:200-1:500

Protein Background:

Protease-inhibitor that contains multiple distinct protease inhibitor domains. Probably has serine protease- and metalloprotease-inhibitor activity.

Gene ID:

WFIKKN1

Uniprot

Q96NZ8

Synonyms:

WAP, Kazal, immunoglobulin, Kunitz and NTR domain-containing protein 1 (Growth and differentiation factor-associated serum protein 2) (GASP-2) (hGASP-2) (WAP, follistatin, immunoglobulin, Kunitz and NTR domain-containing protein), WFIKKN1, C16orf12 GASP2 WFIKKN

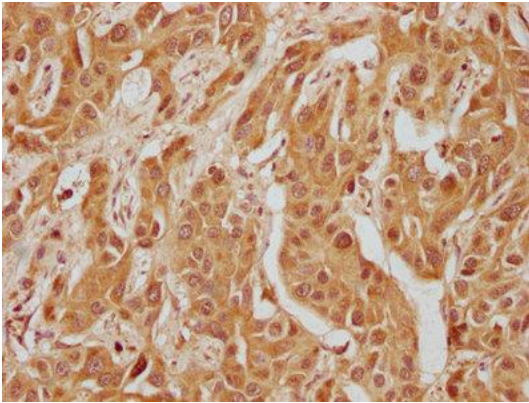
Immunogen:

Peptide sequence from Human WAP, Kazal, immunoglobulin, Kunitz and NTR domain-containing protein 1 protein (187-207AA).

Storage:

Preservative: 0.03% Proclin 300. Constituents: 50% Glycerol, 0.01M PBS, pH 7.4

Product Images



IHC image of PACO63183 diluted at 1:300 and staining in paraffin-embedded human liver cancer performed on a Leica Bond™ system. After dewaxing and hydration, antigen retrieval was mediated by high pressure in a citrate buffer (pH 6.0). Section was blocked with 10% normal goat serum 30min at RT. Then primary antibody (1% BSA) was incubated at 4°C overnight. The primary is detected by a biotinylated secondary antibody and visualized using an HRP conjugated SP system.