

Product Information

Size:

50ul

Reactivity:

Human, Rat

Source:

Rabbit

Isotype:

IgG

Applications:

ELISA, WB, IHC

Recommended dilutions:

ELISA:1:2000-1:10000, WB:1:500-1:2000,
IHC:1:20-1:200

Protein Background:

Endoplasmic reticulum disulfide reductase involved both in the correct folding of proteins and degradation of misfolded proteins. Required for efficient folding of proteins in the endoplasmic reticulum by catalyzing the removal of non-native disulfide bonds formed during the folding of proteins, such as LDLR. Also involved in endoplasmic reticulum-associated degradation (ERAD) by reducing incorrect disulfide bonds in misfolded glycoproteins recognized by EDEM1. Interaction with HSPA5 is required its activity, not for the disulfide reductase activity, but to facilitate the release of DNAJC10 from its substrate. Promotes apoptotic signaling pathway in response to endoplasmic reticulum stress.

Gene ID:

DNAJC10

Uniprot

Q8IXB1

Synonyms:

DnaJ homolog subfamily C member 10 (EC 1.8.4) (Endoplasmic reticulum DNA J domain-containing protein 5) (ER-resident protein ERdj5) (ERdj5) (Macrothioredoxin) (MTHr), DNAJC10, ERDJ5

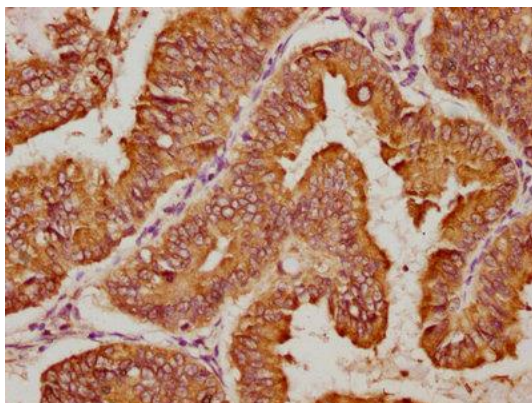
Immunogen:

Recombinant Human DnaJ homolog subfamily C member 10 protein (521-793AA).

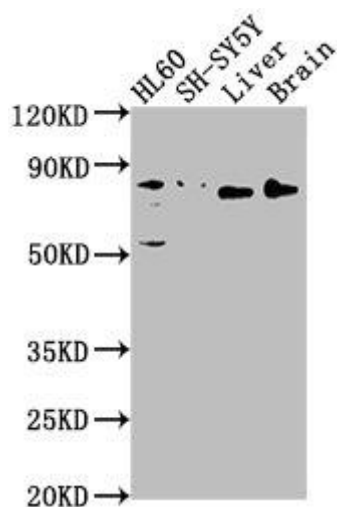
Storage:

Preservative: 0.03% Proclin 300. Constituents: 50% Glycerol, 0.01M PBS, pH 7.4

Product Images



IHC image of PACO63147 diluted at 1:100 and staining in paraffin-embedded human endometrial cancer performed on a Leica Bond™ system. After dewaxing and hydration, antigen retrieval was mediated by high pressure in a citrate buffer (pH 6.0). Section was blocked with 10% normal goat serum 30min at RT. Then primary antibody (1% BSA) was incubated at 4°C overnight. The primary is detected by a biotinylated secondary antibody and visualized using an HRP conjugated SP system.



Western Blot. Positive WB detected in: HL60 whole cell lysate, SH-SY5Y whole cell lysate, Rat liver tissue, Rat brain tissue. All lanes: DNAJC10 antibody at 1:1000. Secondary. Goat polyclonal to rabbit IgG at 1/50000 dilution. Predicted band size: 92, 87, 38 kDa. Observed band size: 80 kDa.