

## Product Information

**Size:**

50ul

**Reactivity:**

Human, Mouse

**Source:**

Rabbit

**Isotype:**

IgG

**Applications:**

ELISA, WB, IF

**Recommended dilutions:**

ELISA:1:2000-1:10000, WB:1:1000-1:5000,  
IF:1:200-1:500

**Protein Background:**

Converts sphingomyelin to ceramide. Also has phospholipase C activity toward palmitoyl lyso-phosphocholine. Does not appear to have nucleotide pyrophosphatase activity.

**Gene ID:**

ENPP7

**Uniprot**

Q6UWV6

**Synonyms:**

Ectonucleotide pyrophosphatase/phosphodiesterase family member 7 (E-NPP 7) (NPP-7) (EC 3.1.4.12) (Alkaline sphingomyelin phosphodiesterase) (Intestinal alkaline sphingomyelinase) (Alk-SMase), ENPP7

**Immunogen:**

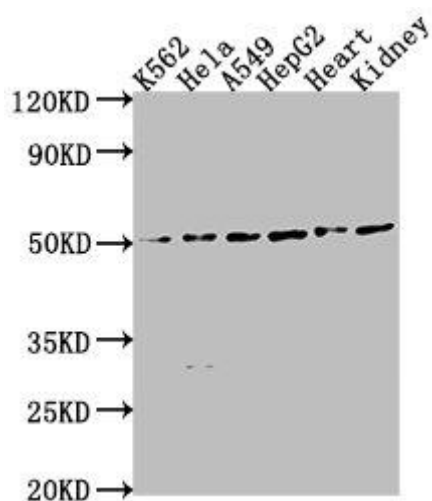
Recombinant Human Ectonucleotide pyrophosphatase/phosphodiesterase family member 7 protein (22-216AA).

**Storage:**

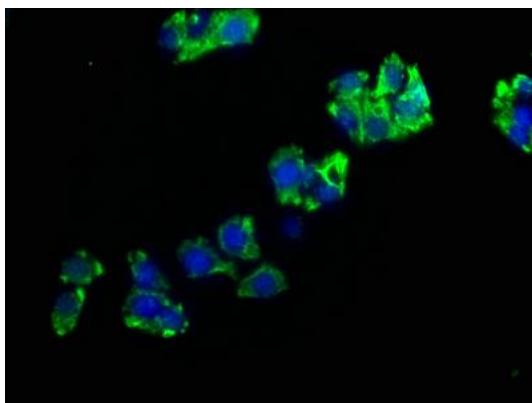
Preservative: 0.03% Proclin 300. Constituents: 50% Glycerol, 0.01M PBS, pH 7.4

## Product Images

---



Western Blot. Positive WB detected in: K562 whole cell lysate, HeLa whole cell lysate, A549 whole cell lysate, HepG2 whole cell lysate, Mouse heart tissue, Mouse kidney tissue. All lanes: ENPP7 antibody at 1:2000. Secondary. Goat polyclonal to rabbit IgG at 1/50000 dilution. Predicted band size: 52 kDa. Observed band size: 52 kDa.



Immunofluorescence staining of HepG2 cells with PACO63135 at 1:200, counter-stained with DAPI. The cells were fixed in 4% formaldehyde, permeabilized using 0.2% Triton X-100 and blocked in 10% normal Goat Serum. The cells were then incubated with the antibody overnight at 4°C. The secondary antibody was Alexa Fluor 488-conjugated AffiniPure Goat Anti-Rabbit IgG(H+L).