

Product Information

Size:

50ul

Reactivity:

Human

Source:

Rabbit

Isotype:

IgG

Applications:

ELISA, WB, IF

Recommended dilutions:

ELISA:1:2000-1:10000, WB:1:500-1:2000,
IF:1:50-1:200

Protein Background:

Deubiquitinating enzyme that hydrolyzes 'Lys-6'- and 'Lys-11'-linked polyubiquitin. Also hydrolyzes heterotypic (mixed and branched) and homotypic chains.

Gene ID:

OTUD3

Uniprot

Q5T2D3

Synonyms:

OTU domain-containing protein 3 (EC 3.4.19.12), OTUD3, KIAA0459

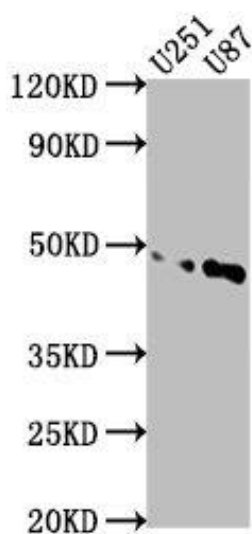
Immunogen:

Recombinant Human OTU domain-containing protein 3 protein (108-398AA).

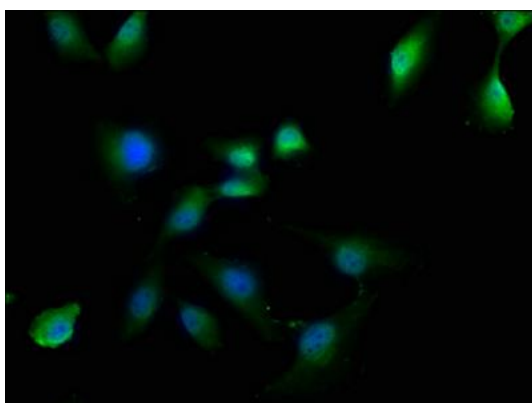
Storage:

Preservative: 0.03% Proclin 300. Constituents: 50% Glycerol, 0.01M PBS, pH 7.4

Product Images



Western Blot. Positive WB detected in: U251 whole cell lysate, U87 whole cell lysate. All lanes: OTUD3 antibody at 1:1000. Secondary. Goat polyclonal to rabbit IgG at 1/50000 dilution. Predicted band size: 46 kDa. Observed band size: 46 kDa.



Immunofluorescence staining of U251 cells with PACO63103 at 1:50, counter-stained with DAPI. The cells were fixed in 4% formaldehyde, permeabilized using 0.2% Triton X-100 and blocked in 10% normal Goat Serum. The cells were then incubated with the antibody overnight at 4°C. The secondary antibody was Alexa Fluor 488-conjugated AffiniPure Goat Anti-Rabbit IgG(H+L).