

PACO63047

Product Information

Size:

50ul

Reactivity:

Legionella pneumophila subsp

Source:

Rabbit

Isotype:

IgG

Applications:

ELISA, WB

Recommended dilutions:

ELISA:1:2000-1:10000, WB:1:1000-1:5000

Protein Background:**Gene ID:**

sdeA

Uniprot

Q5ZTK4

Synonyms:

Ubiquitinating/deubiquitinating enzyme SdeA (Effector protein SdeA) [Includes: Deubiquitinase (DUB) (EC 3.4.22) (Deneddylase) (Deubiquitinating enzyme); Ubiquitin transferase (EC 2.3.2); Mono-ADP-ribosyltransferase (mART) (EC 2.4.2.31)], sdeA

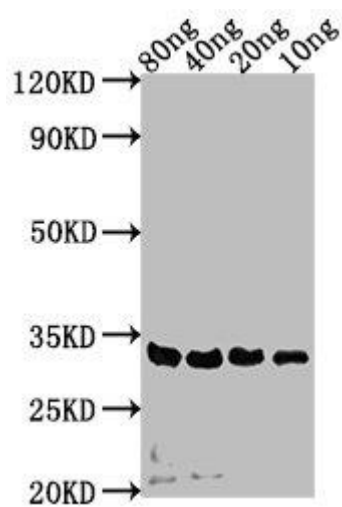
Immunogen:

Recombinant Legionella pneumophila subsp Ubiquitinating/deubiquitinating enzyme SdeA protein (19-268AA).

Storage:

Preservative: 0.03% Proclin 300. Constituents: 50% Glycerol, 0.01M PBS, pH 7.4

Product Images



Western Blot. Positive WB detected in Recombinant protein. All lanes: sdeA antibody at 1:2000. Secondary. Goat polyclonal to rabbit IgG at 1/50000 dilution. Predicted band size: 32 kDa. Observed band size: 32 kDa.