

# GDV1 Antibody



PACO63043

---

## Product Information

**Size:**

50ul

**Reactivity:**

Plasmodium relictum

**Source:**

Rabbit

**Isotype:**

IgG

**Applications:**

ELISA, WB

**Recommended dilutions:**

ELISA:1:2000-1:10000, WB:1:1000-1:5000

**Protein Background:****Gene ID:**

GDV1

**Uniprot**

A0A1J1H4F2

**Synonyms:**

Gametocyte development protein 1, putative, GDV1

**Immunogen:**

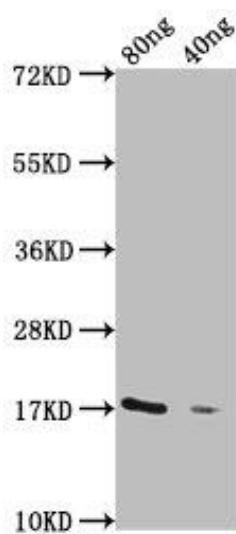
Recombinant Plasmodium relictum Gametocyte development protein 1, putative protein (1-190AA).

**Storage:**

Preservative: 0.03% Proclin 300. Constituents: 50% Glycerol, 0.01M PBS, pH 7.4

## Product Images

---



Western Blot. Positive WB detected in Recombinant protein. All lanes: GDV1 antibody at 1:2000. Secondary. Goat polyclonal to rabbit IgG at 1/50000 dilution. Predicted band size: 17 kDa. Observed band size: 17 kDa.