

PACO62939

---

## Product Information

**Size:**

50ul

**Reactivity:**

Human

**Source:**

Rabbit

**Isotype:**

IgG

**Applications:**

ELISA, WB

**Recommended dilutions:**

ELISA:1:2000-1:10000, WB:1:1000-1:5000

**Protein Background:**

Molecular chaperone for LDL receptor-related proteins that may regulate their ligand binding activity along the secretory pathway.

**Gene ID:**

LRPAP1

**Uniprot**

P30533

**Synonyms:**

Alpha-2-macroglobulin receptor-associated protein (Alpha-2-MRAP) (Low density lipoprotein receptor-related protein-associated protein 1) (RAP), LRPAP1, A2MRAP

**Immunogen:**

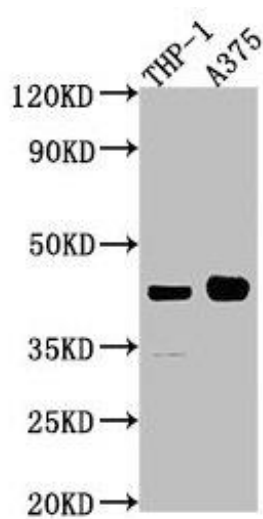
Recombinant Human Alpha-2-macroglobulin receptor-associated protein (35-357AA).

**Storage:**

Preservative: 0.03% Proclin 300. Constituents: 50% Glycerol, 0.01M PBS, pH 7.4

## Product Images

---



Western Blot. Positive WB detected in: THP-1 whole cell lysate, A375 whole cell lysate. All lanes: LRPAP1 antibody at 1:2000. Secondary. Goat polyclonal to rabbit IgG at 1/50000 dilution. Predicted band size: 42 kDa. Observed band size: 42 kDa.