

Product Information

Size:

50ul

Reactivity:

Human

Source:

Rabbit

Isotype:

IgG

Applications:

ELISA, WB, IHC

Recommended dilutions:

ELISA:1:2000-1:10000, WB:1:500-1:2000,
IHC:1:20-1:200

Protein Background:

Functions as transcription regulator in the hedgehog (Hh) pathway. Functions as transcriptional activator. May also function as transcriptional repressor. Requires STK36 for full transcriptional activator activity. Required for normal embryonic development.

Gene ID:

GLI2

Uniprot

P10070

Synonyms:

Zinc finger protein GLI2 (GLI family zinc finger protein 2) (Tax helper protein), GLI2, THP

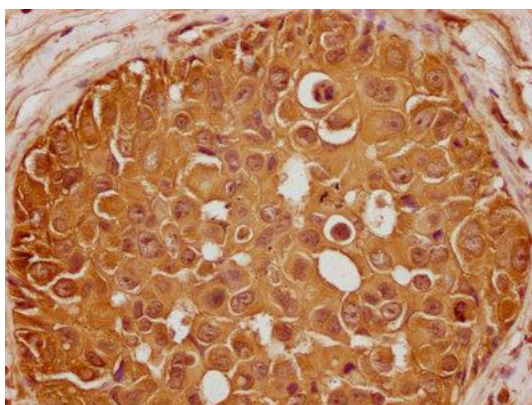
Immunogen:

Peptide sequence from Human Zinc finger protein GLI2 protein (2-20AA).

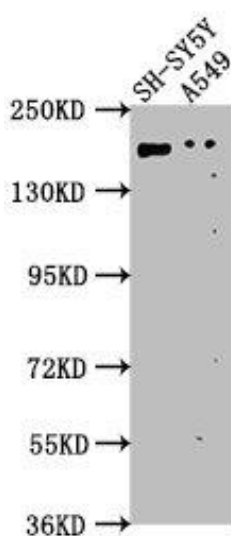
Storage:

Preservative: 0.03% Proclin 300. Constituents: 50% Glycerol, 0.01M PBS, pH 7.4

Product Images



IHC image of PACO62911 diluted at 1:100 and staining in paraffin-embedded human breast cancer performed on a Leica Bond™ system. After dewaxing and hydration, antigen retrieval was mediated by high pressure in a citrate buffer (pH 6.0). Section was blocked with 10% normal goat serum 30min at RT. Then primary antibody (1% BSA) was incubated at 4°C overnight. The primary is detected by a biotinylated secondary antibody and visualized using an HRP conjugated SP system.



Western Blot. Positive WB detected in: SH-SY5Y whole cell lysate, A549 whole cell lysate. All lanes: GLI2 antibody at 1:1000. Secondary. Goat polyclonal to rabbit IgG at 1/50000 dilution. Predicted band size: 168, 134, 132, 89, 87 kDa. Observed band size: 168 kDa.